

## Guide to St. Joseph, Michigan

---

Edgewater Automation welcomes you to St. Joseph, Michigan. We are so glad you're here. As we know, you are here on business, but we want to provide you with some information on southwest Michigan just in case you have some time for leisure. If you don't have time this trip, maybe someday you can set aside vacation time and enjoy the great southwest Michigan.

## PLACES TO SEE:

### Silver Beach



Located in St. Joseph at the mouth of the St. Joseph River, Silver Beach County Park features a clean, wide beach on Lake Michigan and public access to the South Pier. Voted by many as the best beach in Michigan.

### Silver Beach Carousel & Center



Make a memory all year 'round at the Silver Beach Carousel! The horses, the tigers, the hippocampus, the panda, the clown fish – in all, 48 unique carousel figures and two chariots. Silver Beach Center has 5 more attractions to see: Whirlpool Compass Fountain, Curious Kids' Discovery Zone by Curious Kids' Museum, Silver Beach Amusement Museum, Michigan's Tallest Kaleidoscope and Shadowland on Silver Beach.

### Whirlpool Compass Fountain



The Whirlpool Compass Fountain is located below the Bluff along your walk to Silver Beach. The fountain is open to the public and sprays water 35 feet in the air, the outer ring of the pad is 200 ft. in diameter and has a water reservoir that holds 10,860 gallons of recycled water.

### St. Joseph Pier



Located on Lake Michigan, at the mouth of St. Joseph River near Tiscornia Park. These storied lighthouses of St. Joseph function together as a front and rear range set of lights, to guide the mariners into the St. Joseph River from Lake Michigan. St. Joseph Lights, along with Grand Haven Lights, are the only locations in the state of Michigan that have two lighthouses at one location that work with another.

### Warren Dunes State Park



Warren Dunes has three miles of shoreline, six miles of hiking trails and is open year-round. It also has a dune formation that rises 260 feet above the lake with spectacular views and 1,952 acres of recreational opportunity. 221 modern & rustic campsites and three modern mini cabins. Located at 12032 Red Arrow Hwy. Sawyer, MI 49125. Call 269-426-4013. Recreation passport is required.

## THINGS TO DO:

### Box Factory for the Arts



A great place for the local community and visitors to celebrate the arts. Featuring three art galleries, 37 artist studios, cafe, gift shop and stage. Live music every Saturday night. Contact 269-983-3688 or visit [www.boxfactoryforthearts.org](http://www.boxfactoryforthearts.org) for more information.

### Celebration Cinema



Thirteen screens playing the newest films and an exceptional concession area and game room. Call 269-934-7469 or visit [www.celebrationcinema.com/location/BentonHarbor](http://www.celebrationcinema.com/location/BentonHarbor) for movies and show times.

### Czars 505



Live music entertainment club for jazz blues R&B comedy and electric rock. Located at 505 Pleasant St. Call 269-983-1166 or visit [www.czars.com](http://www.czars.com) for more information.

### Harbor Shores Golf



Since its highly anticipated opening in July 2010, the Golf Club at Harbor Shores has quickly become a premier destination for golfers from throughout the Midwest. Call 269-927-4653 or visit [www.harborshoreslife.com](http://www.harborshoreslife.com) for more information.

### Hidden Pointe Fun Park



18 Holes of mini golf, arcade, softball & baseball batting cages. Newly installed Go-Cart Track! Concessions available or bring a picnic basket. Fun for the whole family! Call 269-926-1358 or visit [www.hiddenpointe.net](http://www.hiddenpointe.net) for more information.

### John & Dede Howard Ice Arena



In the winter months, enjoy the local ice rink. Call 269-983-8795 for open skate times and rental fees information.

### John & Dede Howard Skateboard Park



The John and Dede Howard Skate Park is an in-line skating, skateboarding, and BMX biking facility. Complete with ramps, rails and half-pipes. Located on Pearl Street near Langley Ave.

### Lake Michigan Shore Wine Trail



From the state line of Michigan and Indiana north to Saugatuck; from the lakeshore to the east at vineyards beyond Paw Paw this countryside contains over 10,000 acres of grapes! Visit [www.miwinetrail.com](http://www.miwinetrail.com) for more information.

### The Livery



A great place offering 'Hand Forged Microbrews,' the Livery is the place to get together. Live entertainment all throughout the week is a big draw for the Livery. Call 269-925-8760 or visit [www.liverybrew.com](http://www.liverybrew.com) for more information.

## Sea Hawk Charters



Captain Russ Clark offers you a full-time year-round Sport Fishing Charter Service on Lake Michigan and the St. Joseph River. Lake Michigan Cruises are also available April through September. Call 269-429-6110 or visit [www.fishseahawk.com](http://www.fishseahawk.com) for more information.

## St. Joseph River Canoe & Kayak Livery



Paddle on the rivers St. Joseph or Paw Paw - or even Lake Michigan! Call 269-277-4434 or visit [www.fishermanswharfsj.com](http://www.fishermanswharfsj.com) for more information.

## Stubblefield Tennis Courts



Newly constructed tennis courts. Open for public use when not in use by St. Joseph Public Schools. First come first serve and restrooms are available. Located on 2499 Stadium Drive near St. Joseph High School.

## YMCA



Gym, pool, running track, racquetball and more. Contact 269-428-9622 or visit [www.bhsymca.org](http://www.bhsymca.org) for more information.

## FOOD TO EAT:

### Silver Beach Pizza



Great pizza in a great location. Full bar, outside dining, smoke-free inside dining. Located in the train depot 200 yards from Silver Beach. Call 269-983-4743 or visit [www.silverbeachpizza.com](http://www.silverbeachpizza.com) for menu and hours of operation.

### Charlie's Piggin' n' Grinnin' Barbeque



An Edgewater Automation favorite. Enjoy award winning BBQ. Located at 136 Territorial Rd. Call 269-934-7675 or visit [www.piggin-n-grinnin.com](http://www.piggin-n-grinnin.com) for more information.

### Kilwin's of St. Joseph



Old fashioned confectionery shoppe serving enjoyment with delicious ice cream, fudge & chocolates. Call 269-982-1330 or visit [www.kilwins.com](http://www.kilwins.com) for more information.

### Bistro on the Boulevard



Thoughtfully prepared menu, inspired wine list, and caring service. Call 269-983-3882 for reservations or visit [www.theboulevardinn.com](http://www.theboulevardinn.com) for menus and more information.

### Schu's Grill and Bar



Casual, relaxing atmosphere overlooking Lake Michigan. Call 269-983-7248 or visit [www.schus.com](http://www.schus.com) for menus and more information.

## Thornton's Home Town Cafe



Your home town cafe serving breakfast and lunch. Located on Pleasant Street. Call 269-983-0932 for more information.

## The Buck



Burgers and Brew. Located at 412 State St. Call 269-281-0320 or visit [www.eatatthebuck.com](http://www.eatatthebuck.com) for menus and more information.

## Chan's Garden



Chinese food right in the heart of downtown St. Joseph. Lunch specials, combinations plates and family dinners available. Located on 310 State St. Call 269-983-2609 for more information.

## Cabanas Ice Cream



Ice Cream and a whole lot more! Located 512 Broad St. Call 269-985-0161 or visit [www.cabanas.com](http://www.cabanas.com) for more information.

## South Bend Chocolate Cafe



The Chocolate Cafe offers delicious chocolates, desserts and ice cream as well as sandwiches and salads. Located at 300 State St. Call 269-985-9866 or visit [www.sbchocolate.com](http://www.sbchocolate.com).

## Clementine's Too



You can sit on the patio and watch the yachts go by or inside where our nautical theme dining room with floor to ceiling windows. Located near the marina at 1235 Broad St. Call 269-983-0990 or visit [www.ohmydarling.com](http://www.ohmydarling.com).

## RyeBelle's



Rooftop dining overlooking Lake Michigan! Located 518 Broad St. Call 269-281-0318 or visit [www.stjosephsryebelles.com](http://www.stjosephsryebelles.com) for menus and more information.

## Tim's Too



Asian Grill. Located at 511 Pleasant St. Call 269-985-0094 or visit [www.timstoo.com](http://www.timstoo.com) for more information.

## WHERE TO SLEEP:

### The Boulevard Inn



Located at 521 Lake Boulevard St Joseph, MI. Call 269-983-6600 for reservations. Mention Edgewater Automation to get our negotiated \$106/\$126 rate! Visit [www.theboulevardinn.com](http://www.theboulevardinn.com) for more information or make a reservation with our rate using code EDG.

### Holiday Inn Express



Located at 3019 Lakeshore Drive St. Joseph, MI. Call 269-982-0004 for reservations. Mention Edgewater Automation to get our negotiated \$94 rate! Visit [www.hiexpress.com](http://www.hiexpress.com) and enter St. Joseph, Michigan as your destination.

### The Inn at Harbor Shores



Located at 800 Whitwam Drive, St Joseph, MI 49085. Call 269-983-1111 for reservations. Mention Edgewater Automation to get our negotiated rate! Summer \$149/\$179 and off season \$109/\$139. Visit [www.innatharborshores.com](http://www.innatharborshores.com) for more information.

\*Visit the St. Joe Today (Tourist Council) website ([www.sjtoday.org](http://www.sjtoday.org)) for a complete guide of events, shopping, dining, lodging and services of the St. Joseph area.

## WHERE TO FLY INTO:

### South Bend Regional Airport (SBN)



Located 45 minutes away from Edgewater at 4477 Progress Dr. South Bend, IN 46628. Call 574-233-2185 for more information or visit [www.flysbn.com](http://www.flysbn.com).

### Chicago Midway International Airport (MDW)



Located 2 hours from Edgewater at 5700 S Cicero Ave, Chicago, IL 60638. Call 773-686-2200 for more information or visit [www.flychicago.com/midway](http://www.flychicago.com/midway).

### Chicago O'Hare International Airport (ORD)



Located 2 hours from Edgewater at 10000 W O'Hare Ave, Chicago, IL 60666. Call 773-686-2200 for more information or visit [www.flychicago.com/ohare](http://www.flychicago.com/ohare).

### Gerald R. Ford International Airport (GRR)



Located 1 1/2 hours from Edgewater at 5500 44th St SE, Grand Rapids, MI 49512. Call 616-233-600 for more information or visit [www.grr.org](http://www.grr.org).

## OTHER THINGS THAT MIGHT BE HELPFUL:

### **Zielke's Towing**

24hr Towing and Recovery. They even help you when you lock your keys in the car! Call 269-983-0094 or visit [www.zielketowing.com](http://www.zielketowing.com).

### **Lakeland Hospital**

Located at 1234 Napier Avenue St. Joseph, MI. Call 269-983-8300.

### **Southwestern Medical Clinic**

Walk-in Clinic. Located at 5515 Cleveland Ave. Stevensville, MI. Call 269-429-9677.

### **Walgreens**

Open 24 hours. Located at 1260 Hilltop Rd. St. Joseph. Call 269-983-0315.

### **Martin's Supermarket**

Nearest grocery store. Located at 2121 S. Cleveland Ave. St. Joseph. Call 269-983-1223.

### **Meijer**

Open 24 hour. Pharmacy and photo onsite. Two locations: 1920 Pipestone Rd. Benton Harbor 269-926-8229 and 5019 Red Arrow Hwy Stevensville 269-556-2410.

### **Wal-mart**

Pharmacy, photo & eye care available. 1400 Mall Drive Benton Harbor. Call 269-927-6025.

### **The Red Box**

Redbox movie rentals. There is a Redbox the Walgreens, Martin's, Meijer, and Wal-mart listed above. Visit [www.redbox.com](http://www.redbox.com) to check movie availability.

### **Family Video**

Video rental. Located at 2108 Cleveland Avenue. Call 269-982-1855.

### **Laundry Village**

Laundromat. Located at 700 Midway Avenue St. Joe, MI. Call 269-983-9097.

### **Mini Mart**

Liquor Store. Located at 106 Court Street St. Joe, MI. Call 269-983-1711.

### **Anytime Fitness**

24 hour gym and tanning. 1332 Hilltop Rd. Suite C St. Joseph. Call 269-982-4022.



# DIRECTIONS TO EDGEWATER DEVELOPMENT:

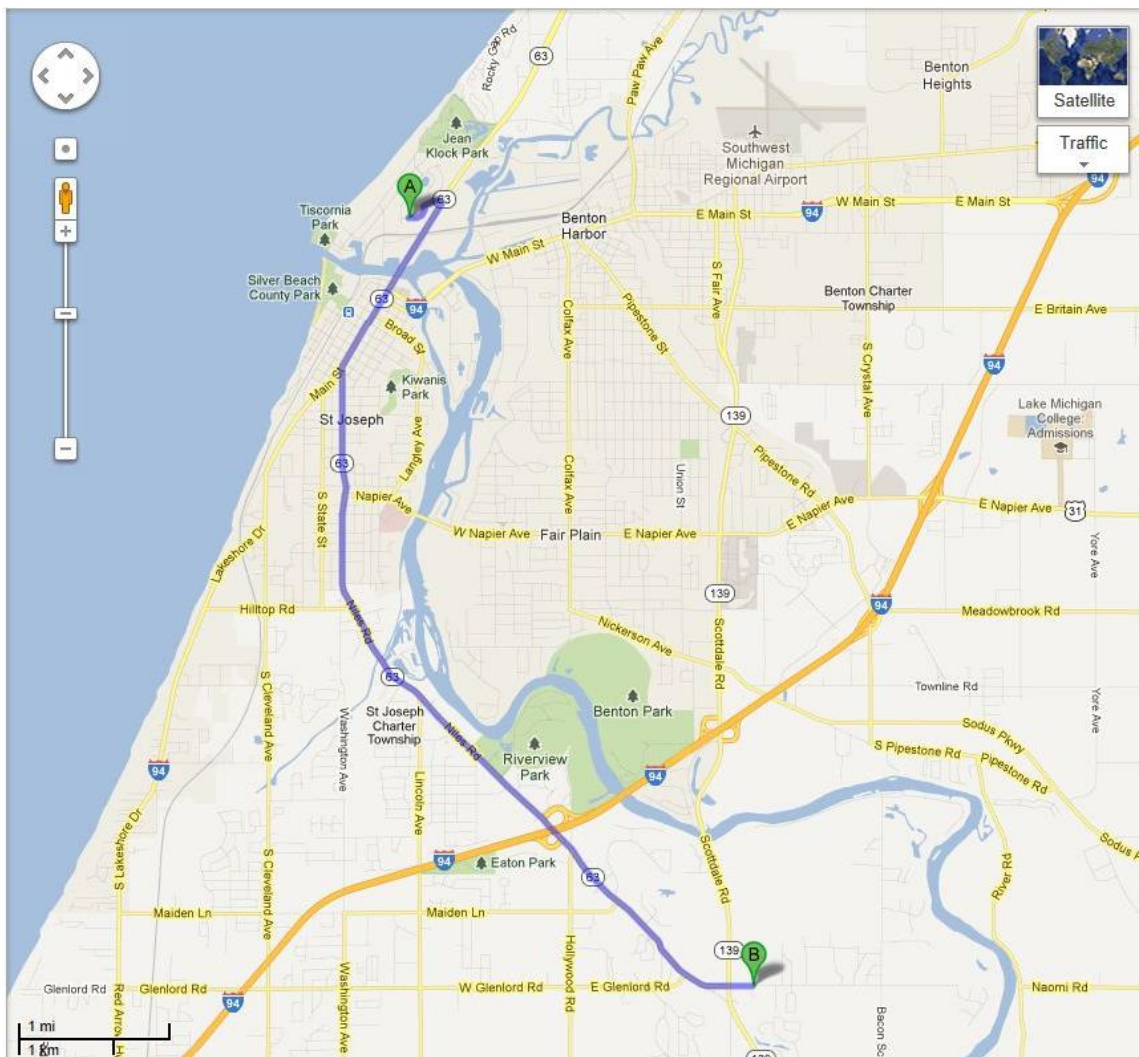
## Address

1000 Miners Rd. Suite B St. Joseph, MI 49085

## Directions (from Edgewater at 481 Renaissance Dr.)

1. Head **EAST** on Renaissance Dr. towards Momany Dr.
2. Turn **RIGHT** onto Momany Dr.
3. Turn **RIGHT** onto M-63 S/Niles Ave.
4. Slight **LEFT** onto M-63 S/Niles Ave. Follow M-63 S. (5.3 miles)
5. Slight **LEFT** onto Miners Rd. Destination will be on the right.
6. Veer **RIGHT** and Edgewater entrance will be on your left.

## Map



# DIRECTIONS TO EDGEWATER MANUFACTURING:

## Address

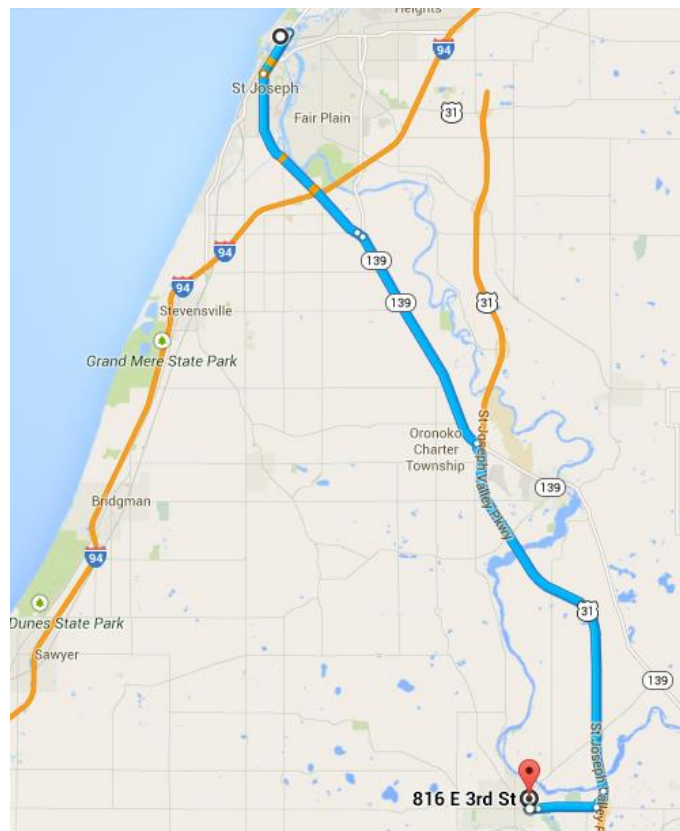
816 East 3<sup>rd</sup> Street Suite 2 Buchanan, MI 49085

## Directions (from Edgewater at 481 Renaissance Dr.)

1. Head **EAST** on Renaissance Dr toward Momany Dr
2. Turn **RIGHT** onto Momany Dr
3. Turn **RIGHT** onto M-63 S
4. Slight **LEFT** onto M-63 S/Niles Ave
5. Turn **RIGHT** onto S Niles Rd
6. Turn **RIGHT** onto M-139 S
7. Turn **RIGHT** to merge onto US-31 S toward S Bend
8. Take exit 5 for Niles Buchanan Road
9. Turn **RIGHT** onto Niles Buchanan Rd
10. Continue onto E Front St
11. Turn **RIGHT** onto Skyline
12. Continue onto E 3rd St

Destination will be on the left

## Map





Tiscornia Beach, North Pier Lighthouse, Edgewater M-63 North

Berrien County Court House

Welcome Center  
Info, maps, bike rentals

Post Office

Fire Station

City Hall, Police

Box Factory for the Arts

**P = Free Parking**

Main St. BL-94/M-63



Morrison Ave.

BL-94/M-63/Main Street

Niles Ave. M-63

Harrison Ave.

Michigan Ave.

Wisconsin Ave.

Wolcott Ave.

First Ave.

Fores Ave.

South State St.

Winchester Ave.

BL-94/Lakeshore Drive  
To I-94/Exit 23

Lakeview Ave.

Howard Ave.

**STAY LOCALLY!**  
Holiday Inn Express-St. Joseph  
Comfort Suites of St. Joseph  
Candlewood Suites

Silver Beach Parking

John & Dede Howard Family Recreation Trail Bicycle & Walking Path



Silver Beach

Broad St.

Elm St.

Market St.

Pearl St.

Lake St.

Lions Park Drive

1st St.

Recreation Trail

Park St.

Lake Blvd.

Jones St.

Hoyt St.

Hatch St.

Sutherland Ave.

Lake Blvd.

Train Depot

Library

Krasl Art Center

Park St.

Price St.

Jones St.

Hoyt St.

Hatch St.

Sutherland Ave.

Lake Blvd.

Lake Blvd.

Lake Blvd.

Lake Blvd.

Lake Blvd.